

## Mortality in LASA compared to the Dutch population, ages 60-85

January, 2012

[www.lasa-vu.nl](http://www.lasa-vu.nl)

The representativeness of the LASA-sample was examined by comparing mortality in our sample to that in the Dutch population.

We estimated 1-year mortality in LASA by dividing the percentage that died between subsequent measurement waves by three, since the interviews were held with 3-year intervals. An exception was the interval between wave E (2001-2003) and wave F (2005-2006), which was on average 3.8 years.

In Figures 1 and 2, these percentages are compared with the 1-year mortality figures in the Dutch population in the middle year of each interval (between B and C: 1994; between C and D: 1997, between D and E: 2000, between E and F: 2004, between F and G: 2007).

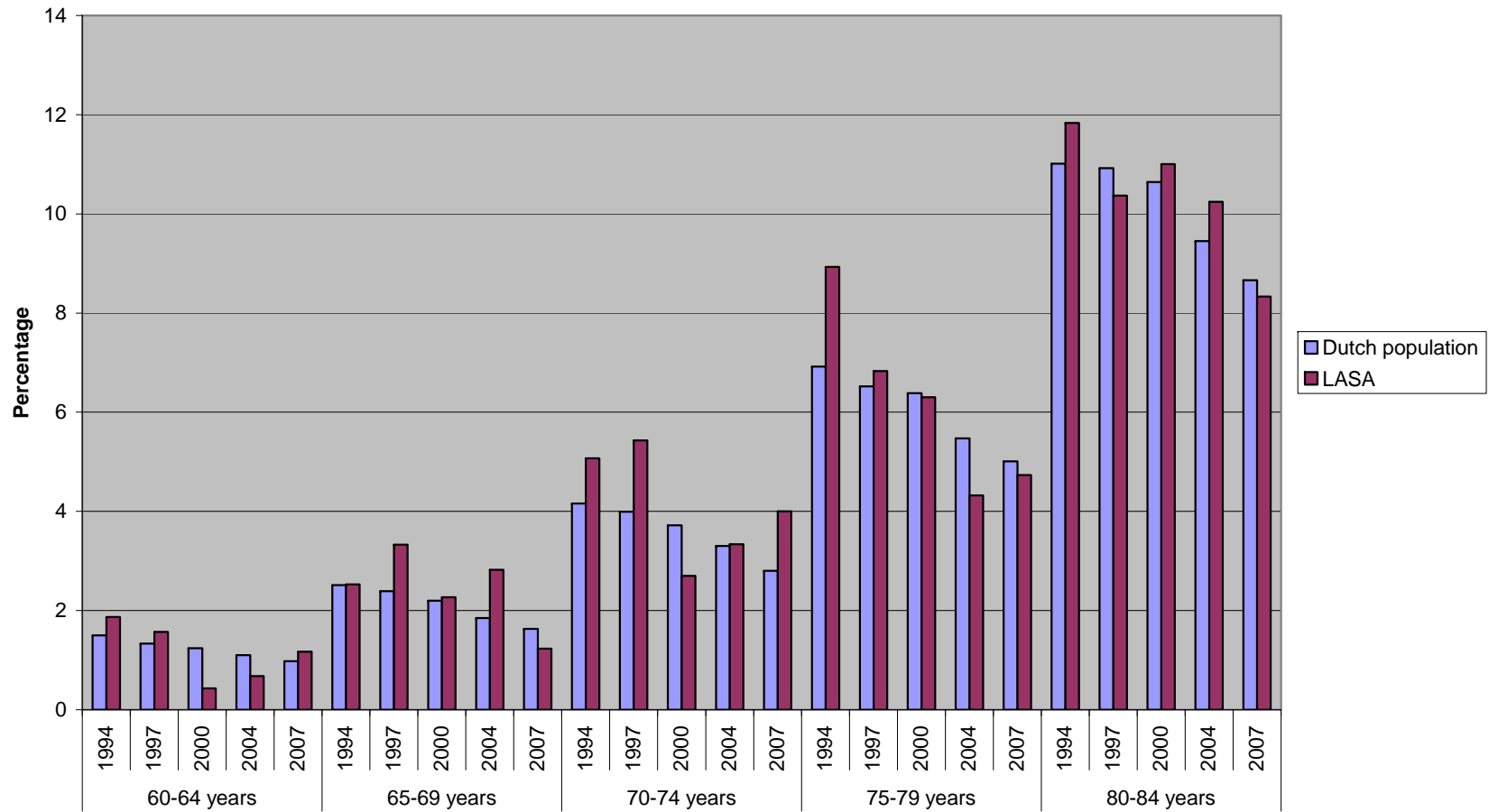
All differences were summed, and weights were applied for the number of LASA-respondents in each group (Table 1).

Table 1. *Weighted sums of differences: Dutch population minus LASA*

	<b>Men</b>	<b>Women</b>
Total	-0.297	-0.365
Per year:		
1994	-0.887	-0.880
1997	-0.427	-0.121
2000	0.279	0.079
2004	0.005	-0.329
2007	-0.091	-0.443
Per age group:		
60-64	0.051	-0.138
65-69	-0.316	-0.150
70-74	-0.539	-0.237
75-79	-0.508	0.033
80-85	-0.240	-1.328

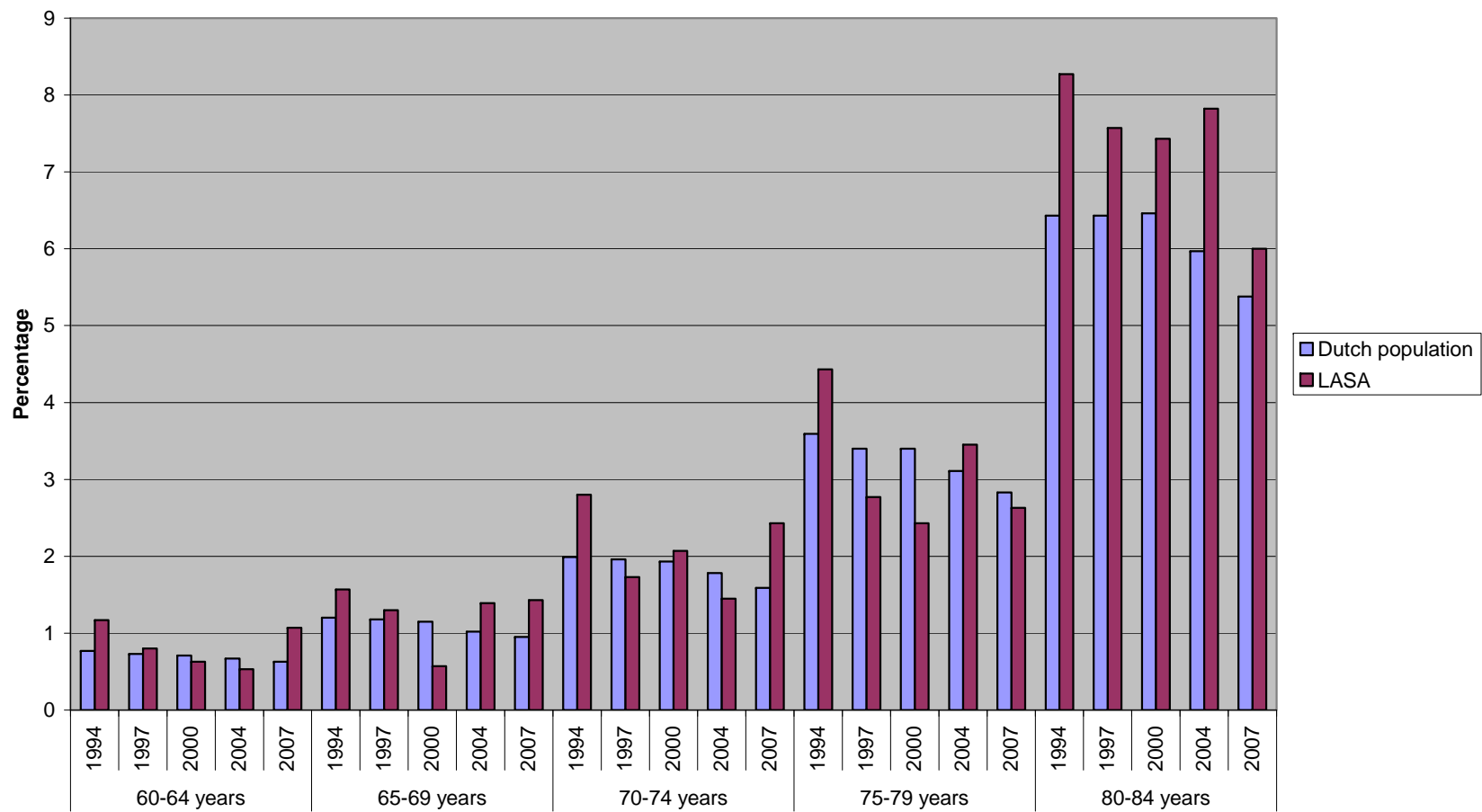
Mortality in the LASA-sample was slightly higher as compared to the Dutch population. However, only among women aged 80-85, this difference exceeded 1%. There was no trend observed in mortality difference according to observation year or age group.

### 1-year mortality Men



**Figure 1. 1-Year male mortality in the LASA sample compared to that in the total Dutch population, ages 60-85.**

### 1-year mortality Women



**Figure 2. 1-Year female mortality in the LASA sample compared to that in the total Dutch population, ages 60-85.**

Table 2. 1-Year mortality in the LASA sample compared to that in the total Dutch population, ages 60-85.

		<b>Men</b>		<b>Women</b>	
		% died in one year		% died in one year	
		Dutch population	LASA	Dutch population	LASA
60-64 years	1994	1.5	1.87	0.77	1.17
	1997	1.33	1.57	0.73	0.8
	2000	1.24	0.43	0.71	0.63
	2004	1.1	0.68	0.67	0.53
	2007	0.98	1.17	0.63	1.07
65-69 years	1994	2.51	2.53	1.2	1.57
	1997	2.39	3.33	1.18	1.3
	2000	2.2	2.27	1.15	0.57
	2004	1.85	2.82	1.02	1.39
	2007	1.63	1.23	0.95	1.43
70-74 years	1994	4.16	5.07	1.99	2.8
	1997	3.99	5.43	1.96	1.73
	2000	3.72	2.7	1.93	2.07
	2004	3.3	3.34	1.78	1.45
	2007	2.8	4	1.59	2.43
75-79 years	1994	6.92	8.93	3.59	4.43
	1997	6.52	6.83	3.4	2.77
	2000	6.38	6.3	3.4	2.43
	2004	5.47	4.32	3.11	3.45
	2007	5.01	4.73	2.83	2.63
80-84 years	1994	11.01	11.83	6.43	8.27
	1997	10.92	10.37	6.43	7.57
	2000	10.64	11	6.46	7.43
	2004	9.45	10.24	5.97	7.82
	2007	8.66	8.33	5.38	6