



### PCA2/PCA1 LASA Affy europeans

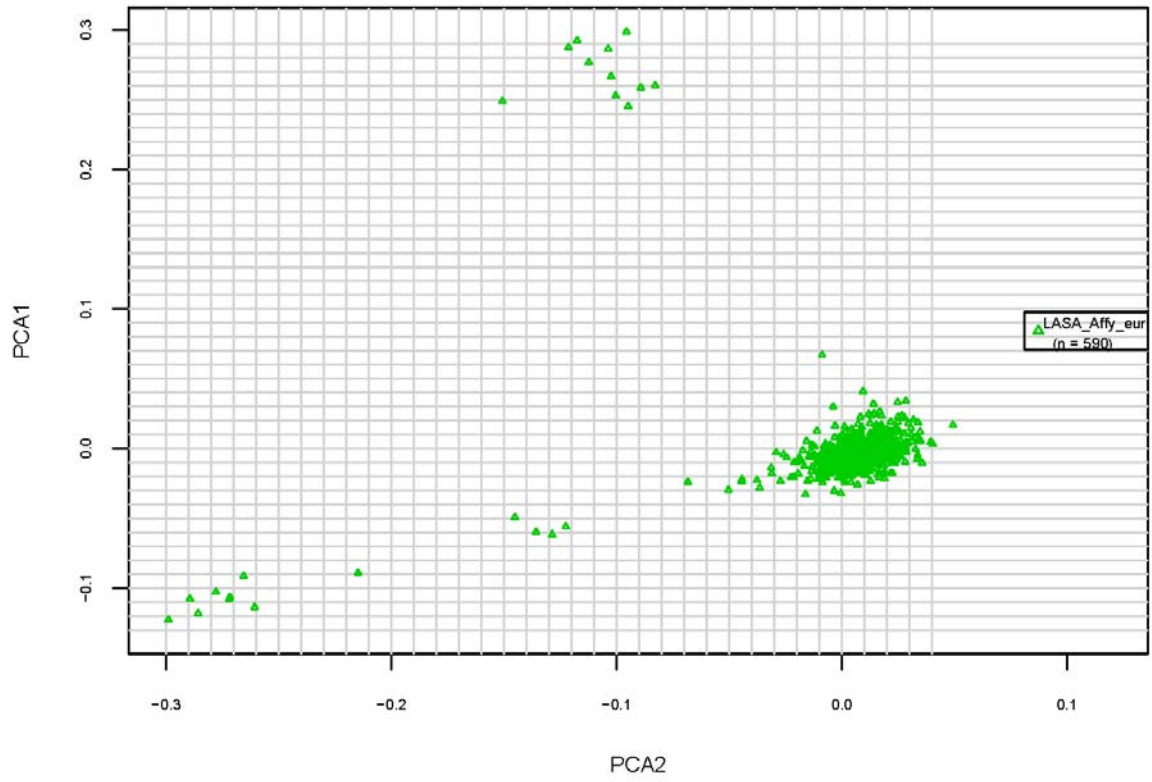
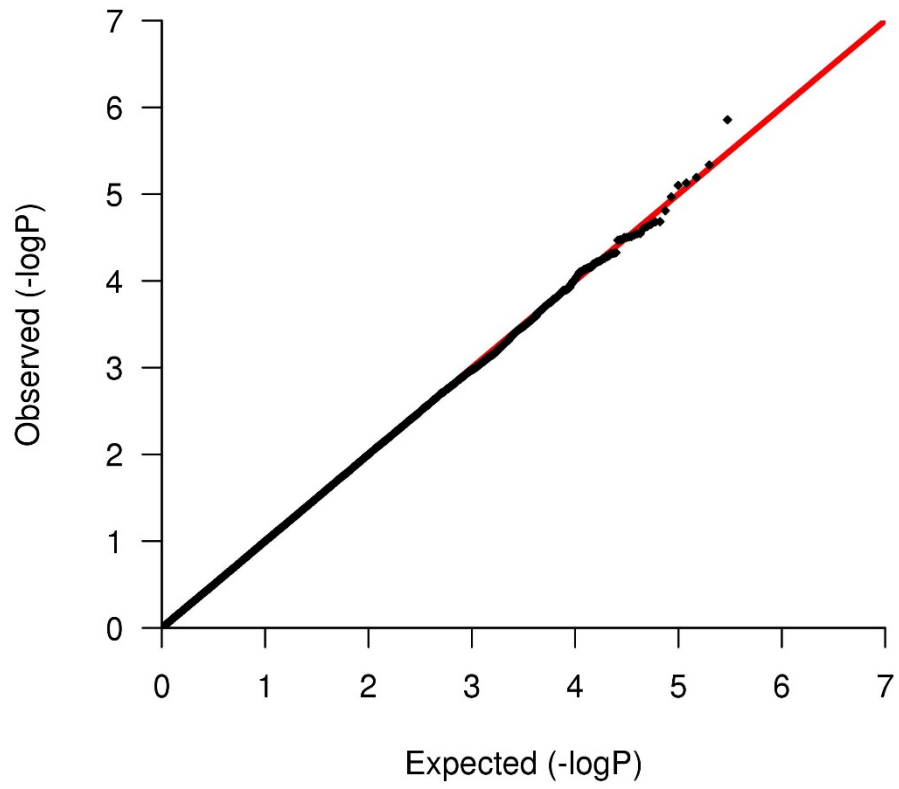


Fig 2: Principal components of LASA Axiom-NL in samples of European ancestry.

Fig 3: QQ plot: GWAS of height in N=588 Axiom-NL European samples adjusting for 10 ancestry-informative principal components derived from previous step represented in fig.2 ( $\lambda=0.995$ ).



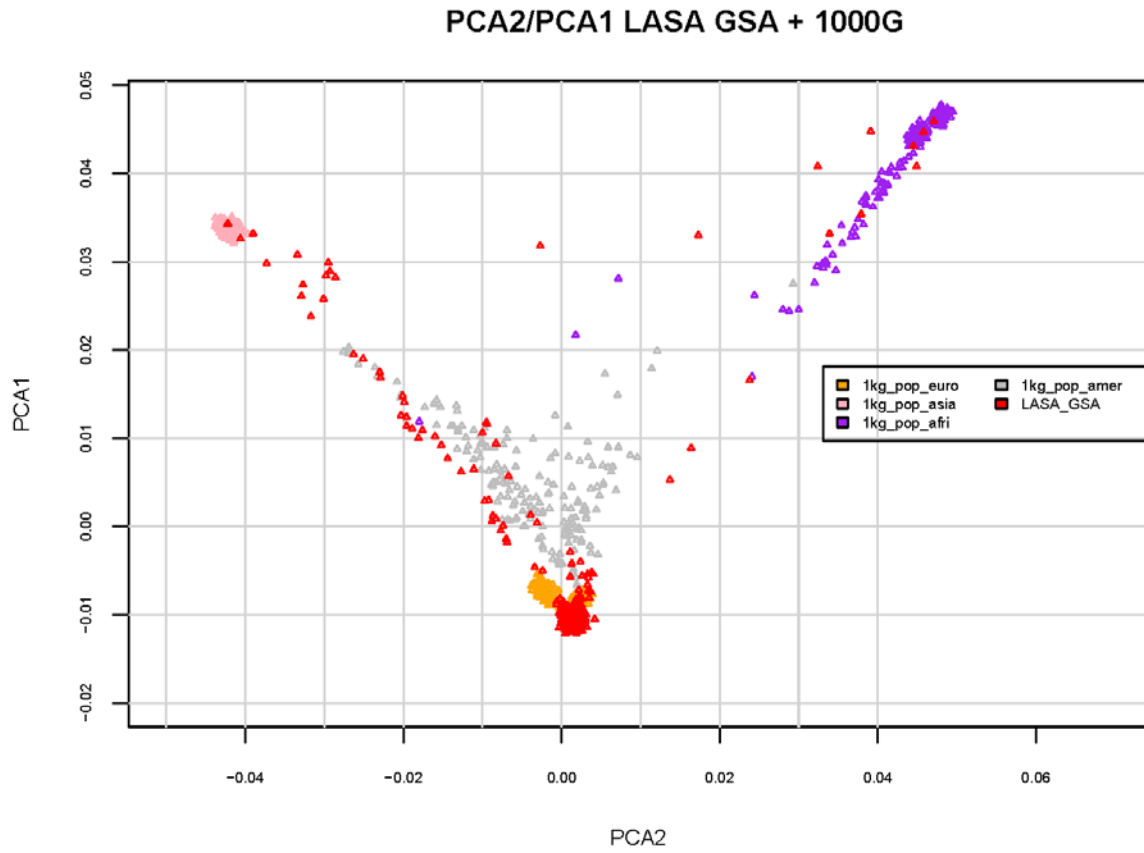


Fig 4: Principal components of LASA GSA and 1000 Genome dataset. Samples of non-European ancestry were identified and later removed using the 1000 Genome data as reference.

### PCA2/PCA1 LASA GSA EUR

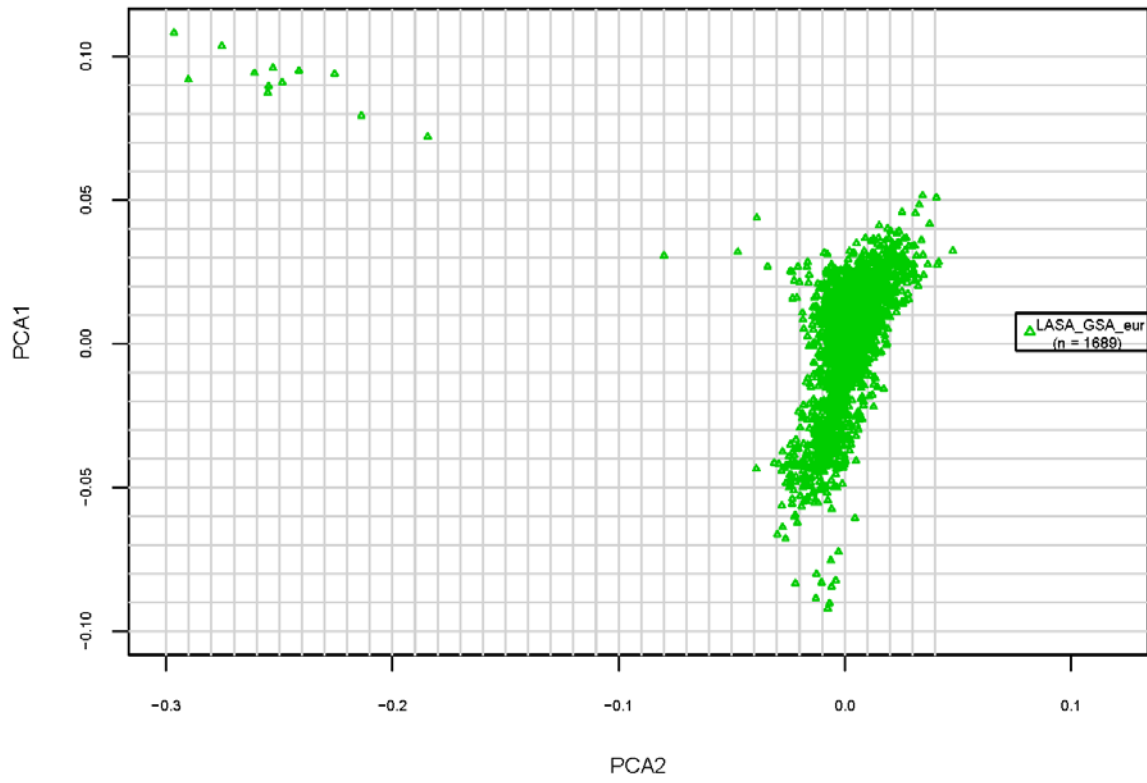


Fig 5: Principal components of LASA GSA in samples of European ancestry.

Fig 6: QQ plot: GWAS of height in N=1689 GSA European sample adjusting for 10 ancestry-informative principal components derived from previous step represented in fig.5 ( $\lambda=1.0108$ ).

